

www.jamesalpe.co.uk



● exterior signs



● indoor displays



● outdoor communication



● vehicle livery

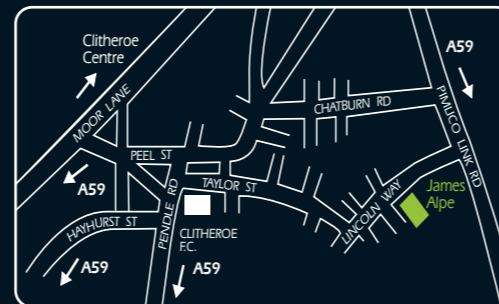


**Sign Design, Manufacture,
Installation & Maintenance**



Lincoln Way
Clitheroe BB7 1OD

- t** 01200 44 44 57
- f** 01200 44 35 55
- e** signs@jamesalpe.co.uk
- w** www.jamesalpe.co.uk



Design & Production: www.conceptuamarketing.com

Communicate With
Impact



It's all about standing out from the crowd...

The most successful companies all share a common capability: the ability to **communicate with impact**. These companies develop their desired image and communicate the image to maximum effect.

Marketing is essential for all businesses and an essential element of marketing is communication. Achieving this enables your business to achieve its goals: build brand awareness, increase enquiries and footfall, maximise **profit**.

Effective signage, for your premises, vehicles, and other indoor and outdoor locations, are an ideal way to communicate with your audience. Communicate effectively and, regardless of the size of your organisation, you will **stand out** from the crowd.

Bold, striking, eye-catching, impactful: professional signage from James Alpe Sign & Design will greatly enhance your company or organisation, be it a retail outlet, hotel, school, university or leisure facility, or maybe a unit on a business park or industrial estate.

Ask yourself: what does your current signage say about your business? From a simple banner to full exterior signage, ensure that you communicate with impact with James Alpe Sign & Design.

“ Communicate effectively and, regardless of the size of your organisation, you will stand out from the crowd. “

Your 'single source' provider...

Sign & Design is one of 7 businesses that forms **James Alpe Limited**: a genuine 'one-stop shop' for commercial and private vehicle solutions.

For vehicle sourcing, look no further. **Vehicle Sales** offers high quality nearly new and used vehicles, sensible prices and a friendly, unhurried service. **Centrepont Vehicle Leasing** combines a wealth of experience and knowledge to ensure that vehicle procurement is made enjoyable, hassle-free and cost-effective. James Alpe **Easy Drive** offers hire vehicles - from compact cars to Luton vans with tail-lifts - and flexible hire arrangements, whilst our **Vehicle Care** business provides everything from self-service power washbays to full showroom valeting.

James Alpe **Vehicle Conversions** offers UK-leading expertise in light commercial conversions and body building. Unsurpassed craftsmanship and design innovation ensure the perfect solution to your requirements. Finally, **Vehicle Services** provides everything from Class 4 & 7 MOT's and servicing to insurance company- and manufacturer-approved accident repair work.

A real breadth of capabilities, a real depth of knowledge: James Alpe Limited - a genuine one-stop shop.



// We offer so much more than simply affordable signage. We provide cost-effective, innovative solutions, tailored to your specific communication needs. We adopt an 'account management' approach with every client and will ensure that you are totally satisfied with every stage of our work, from initial design to ongoing maintenance. Let James Alpe Sign & Design help you to communicate with impact. //

James Alpe
Managing Director



Make a bold statement on the move...

Vehicle graphics offer you essential free advertising space. As with exterior signs, thoughtfully designed vehicle livery will help to keep your organisation 'front of mind' with your existing and potential audiences. A visually striking vehicle not only offers your business **mass exposure** it also communicates the quality and professionalism of your organisation, and this is where design is key.

Whether you have a car, a van or an entire fleet of vehicles, we offer a vast array of livery options, from high quality self-adhesive vinyls, which can be altered as and when desired, to complex photo-quality image applications for massive impact. We can also produce vehicle livery on removable panels for vehicles that are used for more than just commercial purposes.

From our base in Clitheroe we have the **capacity** to handle the largest of fleet vehicle jobs and currently service clients across the UK.

Regardless of the nature of your organisation we will produce stylish, conspicuous designs for your vehicles and transform them into a highly effective advertising medium.



“On average over 75,000 people will see your company vehicle in a typical week: mass exposure and essential free advertising.”



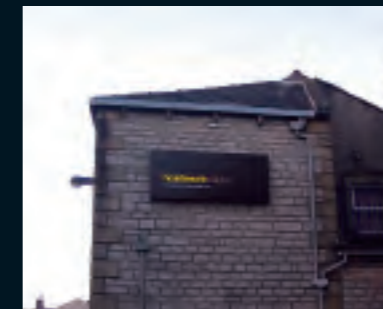
● vehicle livery

Stay 'front of mind' with your audience...

Exterior signs and window graphics serve two purposes: to help visitors to locate you and to **advertise** your organisation, perhaps on a busy high street, main road or business park. A professionally designed and manufactured exterior sign will really sell your organisation to passing or visiting pedestrian or vehicular traffic. Our cost-effective and innovative exterior signs will **guarantee you attention** even in the most competitive of markets or environments.

A free initial consultation and feasibility study will enable us to develop a clear idea of what you wish to achieve from your signage and also to assess any potential legal or environmental issues which may influence your signage options. Exterior signs from James Alpe Sign & Design are tough, hard wearing and resistant to both vandalism and environmental factors such as UV fading and rain damage.

In marketing, staying **'front of mind'** with your potential and existing audience is of paramount importance. Eye-catching exterior signage will go a long way to achieving this for you.



“ Our cost-effective and innovative exterior signs will guarantee you attention even in the most competitive of markets. ”

● exterior signs



Capture the perfect image, evoke a response...

Whilst exterior signage works to draw people to your premises, indoor displays serve to further cement your identity and **evoke a response** from visitors. This response may be an enquiry; it may be in the form of additional sales. Indoor signs and point of sale displays offer a highly effective way to 'upsell' and generate additional business. They add those essential finishing touches to your premises and that extra degree of **professionalism** to your organisation's image.

Indoor displays by James Alpe Sign & Design are durable and eye-catching. From high impact to stylishly understated, we design and install displays that perfectly capture the image of your premises. We can supply and install modular window and wall displays tailored to virtually any requirements.

If you are planning to promote at an exhibition, we can design and manufacture an **eye-catching** stand that will really get you noticed. From a bespoke build to a modular structure, or a combination of the two, we will enhance your presence at an exhibition and produce that all important 'pull factor'.

“ Indoor signs and point of sale displays offer a highly effective way to 'upsell' and generate additional business. ”

Robust, eye-catching, multi-purpose...

Sometimes, for one reason or another, standard exterior signage may not be the ideal solution for your premises. You may be lacking frontage space or perhaps certain restrictions prohibit large scale signage. Perhaps your signage needs to be placed some distance from your building or maybe you require temporary signage for a specific promotion or for seasonal activity.

Our range of A-boards, vinyl banners, hanging and rotating signs can be tailored to cater perfectly for your business needs and can be bespoke designed and manufactured to produce **truly original results**. Vinyl banners and A-boards offer ideal, semi-permanent signage for special offer messages and events, and can be adorned with photo-quality image graphics or bold vinyl detailing. Being portable, these offer you a **durable, versatile outdoor advertising medium**. Hanging and rotating signs capture the professional image of permanent exterior signage whilst offering that extra flexibility of the potential to change the sign with relative ease and minimal disruption.

Low cost, high impact solutions from James Alpe Sign & Design.

“ Outdoor communications offer low cost, high impact solutions - a durable, versatile outdoor advertising medium. ”



● indoor displays

● outdoor communications